



2021/22

WHO'S WHO

The David Attenborough Building



The Conservation Research Institute promotes interdisciplinary research and learning by bringing the natural sciences and technology into intellectual dialogue with the arts, humanities and social sciences. The Institute's agenda focuses on creating understanding and finding solutions – in relation to the fundamental science of biodiversity change, the human activities that drive the loss of living diversity, and considering conservation itself as a highly complex set of ideas and practices.

OUR RESEARCH THEMES

The work programme of the Institute encompasses four broad areas of research, which cross-cut disciplinary and Departmental boundaries.

KNOWLEDGE AND EXPERTISE

Conservation Evidence; 'what works' for the management of terrestrial and aquatic social-ecological systems; new forms of 'Big Data' (from new remote sensing and airborne platforms to social media) and their uses in ecological and social decision making; the science-policy interface and the nature of expertise in a 'Post-Truth' world; diverse and contested knowledge traditions; post-humanism and alternative 'ways of knowing' about humans and nature.

CONSERVATION ACROSS PROTECTED AND PRODUCTIVE LANDSCAPES

Includes innovative methods and strategies to address species decline and loss of habitats; Land Sharing/Sparing; Integrated Landscape Management for multiple ecosystem services; Protected Area governance and management; REDD+; trade-offs and synergies associated with decision making for multiple stakeholders and multiple benefits across different scales; institutional and governance challenges associated with coupled social-ecological systems.

BIODIVERSITY IN THE FUTURE EARTH

Includes work on understanding and changing behaviour in relation to nature and the environment; expectations, incentives, regulations and redistribution for managing human impacts on nature and the drivers of biodiversity loss; material limits to growth, and de-growth; the Nature Needs Half and Half Earth propositions (and their critiques); the histories of conservation practice and policy, and the roles of the state and conservation organisations and conservation.

THE VALUE OF NATURE

Includes work on understanding plural value traditions and the relationship of nature to health, wellbeing, poverty and prosperity; testing potential approaches to reconnect people with nature; the contributions of nature-based approaches to the Sustainable Development Goals and nature-based solutions to mitigating risk and vulnerability; understanding natural and social capitals, and the role of biodiversity in natural capital; assessing ecosystem functions and services, and the contested ways in which these are perceived, used and managed; creative approaches (literature, the arts, media) and how these frame socio-natures.

THE CONSERVATION RESEARCH INSTITUTE TEAM



Professor David Coomes
Conservation Research Institute
Director

dac18@cam.ac.uk

David is the director of the Conservation Research Institute and Head of Forest Ecology and Conservation Group. David is interested in understanding how humans are changing the world's forests and how we can reduce impacts.



Sacha Khoury
Research & Communications
Coordinator

sk884@cam.ac.uk

As Research and Communications Coordinator, Sacha provides support to networks of researchers at the Conservation Research Institute and across the Collegiate University, finding ways to foster closer collaboration and promoting cross-disciplinary funding bids and other activities.



Carmyn de Jonge
Institute Administrator

cd716@cam.ac.uk

As the Institute Administrator, Carmyn provides administrative support to the Institute, as well as assisting with communications and events, represents the Conservation Research Institute on the David Attenborough Building User Group and Suitability Working Group.



The University of Cambridge Conservation Research Institute Who's Who (2021) works as a guide to those who sit within the Conservation Research Institute space of the David Attenborough Building, including brief outlines of their research, department and contact details.

WHO'S WHO

**Professor David Aldridge**

Head of Aquatic Ecology group

Zoology | da113@cam.ac.uk

David's work focuses on applied freshwater ecology, with a particular emphasis on bivalve molluscs.

**Dr Rosamunde Almond**

Visitor: Conservation Science Group

Zoology | reaa2@cam.ac.uk

Rosamunde sits within the Conservation Science Group and aims to build strategic partnerships between people within CRI and other CCI partners.

**Professor Laura Diaz Anadon**

Professor of Climate Change Policy

Land Economy | Ida24@cam.ac.uk

Professor Laura Diaz Anadon holds the chaired Professorship of Climate Change Policy at the University of Cambridge.

**Professor Andrew Balmford**

Professor of Conservation Science

Zoology | apb12@cam.ac.uk

Andrew's research focuses on the costs and benefits of conservation and how best to reconcile conservation and farming.

**James Ball**

PhD Student

Plant Sciences | jgcb3@cam.ac.uk

James is interested in how UAV lidar scanning and satellite remote sensing can be used to assess subtle seasonal changes to leaf area/density down to the level of individual trees.



Debmita Bandyopadhyay

Research Associate

Plant Sciences | db887@cam.ac.uk

Debmita's research focuses on the development of new algorithms for assessing forest health using remotely sensed information.



Harriet Bartlett

PhD Student

Zoology | hb409@cam.ac.uk

Harriet is interested in food security and livestock production systems, the trade-offs between environmental, sustainability, animal welfare and antimicrobial resistance.

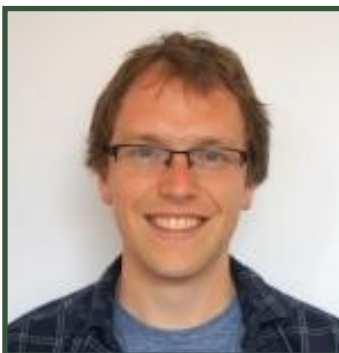


Martin Baur

PhD Student

Geography | mjn311@cam.ac.uk

Martin's PhD focuses on leveraging remote sensing-based information on plant water status for ecosystem models.



Dr Andrew Bladon

Research Associate

Zoology | ajb273@cam.ac.uk

Andrew is interested in the ecological determinants of species ranges, and the impact that human-induced changes are having on species behaviour and distribution.



Shelley Bolderson

Alumni & Communications Coordinator

Geography | shelley.bolderson@geog.cam.ac.uk

Shelley is a former archaeologist, who moved in to the communications sector and has been specializing in external affairs and communications at the University of Cambridge.



Dr Leon Bennun

Visitor: Conservation Science Group

Zoology | lb691@cam.ac.uk

Leon's interests are in the links between science and policy – how biodiversity information can be used to improve outcomes for conservation.



Joshua Brian

PhD Student

Zoology | jib33@cam.ac.uk

Joshua is interest in the parasite of freshwater mussels, how they affect these key ecosystem engineers, and their interaction with invasive bivalves.



Iris Berger

PhD Student

Zoology | ib451@cam.ac.uk

Iris's research involves investigating which agricultural strategies provide the optimal balance of ecosystem service provisioning, yield, and biodiversity protection in India.



Anne Cadoret

Visitor

Land Economy | ac2438@cam.ac.uk

Anne is a visiting researchers at the Department of Land Economy, collaborating with the team of FIDELIO's project.



Dr Camilla Campanati

Postdoctoral Research Associate

Zoology | cc2011@cam.ac.uk

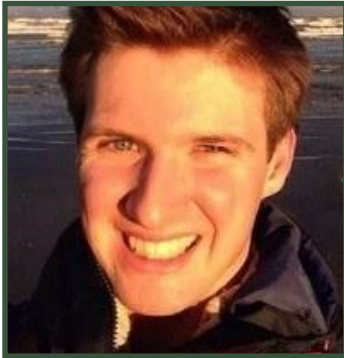
Camilla's research focuses on the physiological responses of marine invertebrates to anthropogenic-induced environmental changes.

**Yujie Cao**

Visiting PhD Student

Plant Sciences | yc547@cam.ac.uk

Yujie is working on quantifying forest changes and on individual tree segmentation using remote sensing data and machine learning algorithms.

**Alec Christie**

Henslow Research Fellow

Zoology | apc58@cam.ac.uk

Alec is interested in assessing the reliability and relevance of evidence and making sure decision-making combines diverse sources of knowledge.

**Sayam Chowdhury**

PhD Student

Zoology | suc21@cam.ac.uk

Sayam is interested in the ecology and conservation of threatened species in Asia, and understanding and mitigating the impact of ecological changes on biodiversity.

**Edgar Cifuentes**

PhD Student

Plant Sciences | efc35@cam.ac.uk

Edgar's research aims to quantify the effects of land-use and climate change on forest ecosystems in Columbia using remote sensing.

**Valerio Donfrancesco**

PhD Student

Geography | vd308@cam.ac.uk

Valerio is researching relations and coexistence between people and large carnivores (e.g. wolves), especially through political ecology approaches.



Professor David Coomes

*Head of Forest Ecology and Conservation group
Plant Sciences | dac18@cam.ac.uk*

David is interested in using remote sensing to better understand how humans are changing the world's forests and identify how we can reduce their negative impacts.



Lydia Collas

*PhD Student
Zoology | lc591@cam.ac.uk*

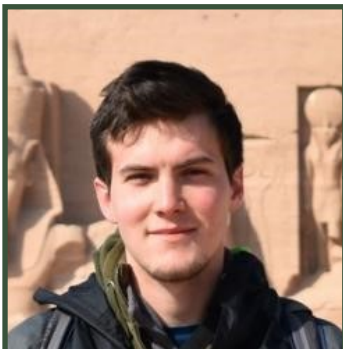
Lydia is investigating farmers willingness to participate in agricultural environment schemes, specifically in the context of land-sparing and land-sharing agriculture.



Sophia Cooke

*Postdoctoral Research Associate
Geography | sc647@cam.ac.uk*

Sophia studies the effects of roads on birds and bats in Britain, and the impacts on an introduced bird species, the Smooth-billed Ani in the Galapagos Islands.



Roberto Correa

*PhD Student
Zoology | rjc206@cam.ac.uk*

Roberto is interested in how we can maximise the return on investment in biodiversity conservation.



Alejandro Guizar Coutiño

*PhD Student
Plant Sciences | ag997@cam.ac.uk*

Alejandro works on conservation impact evaluation, currently focusing on interventions aimed at reducing deforestation and forest degradation in the tropics.



Dr Zara-Louise Cowan

Research Associate

Zoology | zlc25@cam.ac.uk

Zara is a Research Associate who is a part of the Aquatic Ecology Group.



Carmyn de Jonge

Institute Administrator

Geography | cd716@cam.ac.uk

As the Institute Administrator, Carmyn provides administrative support to CRI, as well as supporting in the coordination of events.



Dr Lynn Dicks

Head of Agroecology Research Group

Zoology | Lynn.Dicks@zoo.cam.ac.uk

Lynn works on wild pollinator conservation in agricultural landscapes and evidence-based conservation.



Charles Emogor

PhD Student

Zoology | cae37@cam.ac.uk

Charles research seeks to understand the population dynamics and ecology of three pangolin species in Nigeria.



Philip Erm

PhD Student

Zoology | ple23@cam.ac.uk

Philip is interested in finding out how best to conserve marine biodiversity given the many pressures placed upon our planet's oceans by humanity.

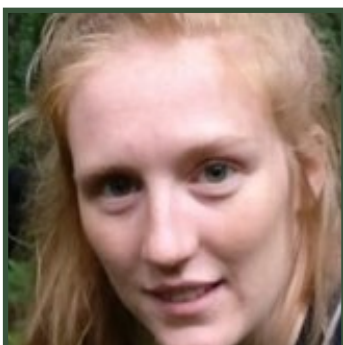


Dr Jérémie Fonvielle

Postdoctoral Research Associate

Plant Sciences | jaf91@cam.ac.uk

Jérémy is interested in the connections between dissolved organic matter and microbes in freshwaters.



Erika Freeman

PhD student

Plant Sciences | ecf31@cam.ac.uk

Erika is studying how forestry influences the quality and quantity of organic matter mobilized into aquatic networks.



Professor Andrew Friend

Professor of Earth Systems Science

Geography | andrew.friend@geog.cam.ac.uk

Andrew's research concerns terrestrial vegetation type, productivity over a wide range of time, space scales, and the effects of vegetation on atmospheric processes and carbon fluxes.



Dr Emma Garnett

Prince of Wales Junior Research Fellow

Institute for Sustainability Leadership |

emma.garnett@cisl.cam.ac.uk

Emma is researching which interventions work to reduce the environmental impact of human diets.



Vassilis Gkoumas

PhD Student

Land Economy | vg345@cam.ac.uk

Vassilis studies the socioeconomic impacts of protected areas on local communities.

**Lucy Goodman**

PhD Student

Geography | lg368@cam.ac.uk

Lucy is interested in the social and environmental impacts of dams in South Asia and environmental economics.

**Professor Rhys Green**

Honorary Professor of Conservation Science

Zoology | reg29@cam.ac.uk

Rhys studies the effects of human activities on populations sizes and demographic rates of wild species.

**Annette Green**

PhD Student

Geography | ag912@cam.ac.uk

Annette is a political ecologist interested in the 'corridor' phenomenon and how it is unfolding across Tanzania's conservation landscape.

**Lisa Harris**

Programme Administrator

Geography | lh382@cam.ac.uk

Lisa is the Programme Administrator for the Conservation Leadership MPhil.

**Martina Harianja**

PhD Student

Zoology | mfh46@cam.ac.uk

Martina is interested in understanding how biodiversity and ecosystem functions benefit from landscape management in the tropics.



Matthew Hayes

Research Assistant

Zoology | mph51@cam.ac.uk

Matthew is interested in studying the ecology, behaviour and habitat requirements of invertebrates in the UK. Matthew sits within the Museum of Zoology.



Julie Hinsch

PhD Student

Zoology | jh2024@cam.ac.uk

Julie's main research interests are sustainable development and ecosystem functions and services, with a focus on insect communities.



Amelia Holcomb

PhD Student

Computer Science | ah2174@cam.ac.uk

Amelia's research focuses on estimating the rate of carbon sequestration in tropical forests using remote sensing.



Ella Hordern

Undergraduate Student

Plant Sciences | ejlh3@cam.ac.uk

Ella is based in the Department of Plant Sciences and is currently undertaking her Part II project.



Broderick House

PhD Student

Zoology | bjh63@cam.ac.uk

Broderick's research investigates novel aquaculture methodologies for their implementation in developing regions addressing food insecurity and nutritional deficiencies.

**James Johnston***PhD Student**Geography | jhj34@cam.ac.uk*

James's research focuses on knowledge gaps within ecological modelling approaches of plant-animal interactions, and aims to incorporate these into existing models.

**Toby Jackson***Research Associate**Plant Sciences | tj312@cam.ac.uk*

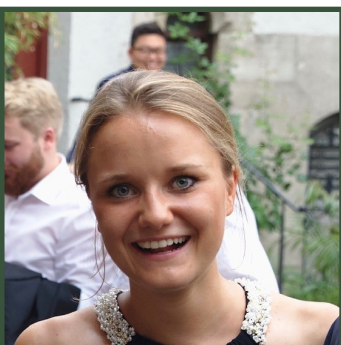
In his work Toby uses repeat airborne LiDAR to monitor the growth and mortality of tropical trees over time and map their detailed 3D architecture.

**Srinivasan Keshav***Robert Sansom professor of computer science**Computer Science | sk818@cam.ac.uk*

Srinivasan's research lies in the intersection of computer science and sustainability.

**Dr Nikoleta Jones***Principle Research Associate**Land Economy | nj322@cam.ac.uk*

Dr Jones is an environmental social scientist and her work focuses mainly on social impacts of environmental policies and improving the levels of public acceptability for policy initiatives.

**Thea Jung***PhD Student**Land Economy | tlj25@cam.ac.uk*

Thea's research focuses on key drivers and barriers to decarbonisation pathways in energy-intensive industries, particularly looking at the cement sector.



Dr Kate Kincaid

Research Associate

Zoology | kk744@cam.ac.uk

Kate's research is in interdisciplinary and focuses on ways to achieve biodiversity conservation along with sustainable livelihoods.



Sacha Khoury

Research & Communications Coordinator

UCCRI | sk884@cam.ac.uk

Sacha's work focuses on the use of remote sensing to monitor forest's resilience to disturbances and climate change.



Juliana Kohli

PhD Student

Plant Sciences | jmk85@cam.ac.uk

Juliana's research focuses on ecosystem recovery after fire in boreal pine forests and more recently, effects of fire in peatlands.



Dr Sergey Kolesnikov

Postdoctoral Research Associate

Land Economy | sk2063@cam.ac.uk

Sergey is interested in understanding the processes of clean energy innovation and the ways by which it can be accelerated through innovation and decarbonisation policies.



Dr Deyu Li

Postdoctoral Research Associate

Land Economy | dl650@cam.ac.uk

Deyu works on the drivers and impacts of technological innovation along the wind energy global value chain.



Rogelio Luque Lora

PhD Student

Geography | rl469@cam.ac.uk

Rogelio's research focuses which values shape conservationists' views, how these values differ between various stakeholders, and the role of landscapes in shaping those values.



Paul Lohmann

PhD Student

Land Economy | pml44@cam.ac.uk

Paul's work combines methods from economics and behavioural science to explore human behaviour, well-being and mental health in the face of climate change.



Dr Sarah Luke

Postdoctoral Research Associate

Zoology | shl47@cam.ac.uk

Sarah studies the effects of habitat change on biodiversity, ecosystem functions, and development of possible strategies for conservation.



Clara Ma

PhD Student

Land Economy | ctm41@cam.ac.uk

Clara is a PhD student based in Land Economy studying energy and climate policy, science and technology policy and the transport and power sector decarbonisation.



Dr Anil Madhavapeddy

University Lecturer and director of 4C.

Computer Science | avsm2@cam.ac.uk

Anil is interested in improving the security, reliability and performance of the Internet and in creating a trusted marketplace for nature-based solutions.



Dr Cicely Marshall

Visitor Postdoctoral Research Fellow

Plant Sciences | cm997@cam.ac.uk

Cicely's work aims to describe patterns of species distribution across tropical Africa and uncover the evolutionary and ecological processes that created and maintain them.



Simon Mathis

PhD Student

Plant Sciences | svm34@cam.ac.uk

Simon is interested in mitigating climate change and its effects, as well as biodiversity loss with the help of data science.



Arile McCarthy

PhD Student

Zoology | ahm43@cam.ac.uk

Arlie's research addresses the risk posed by marine invasive species in Antarctica.



Dr William Morgan

Research Associate

Zoology | whm29@cam.ac.uk

William is working on the Reptile Synopsis.



Fleur Nash

PhD Student

Geography | fn266@cam.ac.uk

Fleur's research focuses on conservation and how social political processes influence practice.

**Dr Howard Nelson**

*MPhil Conservation and Leadership Lecturer
Geography | howard.nelson@fauna-flora.org*

Howard's research centres around issues related to Caribbean island ecology and conservation focusing on sustainable natural resource use and the science-policy interface of protected areas.

**Isobel Ollard**

PhD Student

Zoology | iso21@cam.ac.uk

Isobel is interested in the role of freshwater mussels as ecosystem engineers, in both temperate and tropical freshwater ecosystems, and their use for bioremediation in waterbodies.

**Debbie Pain**

Honorary Research Fellow

Zoology | dp596@cam.ac.uk

Debbie has a wide range of conservation research interests, including diagnosing the causes of declines in threatened bird species and solutions to reverse them.

**Michael Pashkevich**

PhD Student

Zoology | mdp48@cam.ac.uk

Michael's research interests are focused on spider ecology and sustainable agricultural management.

**Dr Adam Pellegrini**

*Head of Disturbance Ecology and Ecosystem
Function group*

Plant Sciences | ap2188@cam.ac.uk

Adam researches how ecosystems respond to changes in disturbance regimes, such as fire suppression, or more frequent burning.



Dr Silviu Petrovan

Senior Research Associate

Zoology | sop21@cam.ac.uk

Silviu's research focuses on understanding the effects of anthropogenic changes on biodiversity and improving evidence-based solutions.



Janice Purath | Conference Administrator

Zoology | jpp44@cam.ac.uk

Janice is the Conference Administrator and aids in organising the Student Conference on Conservation Science.

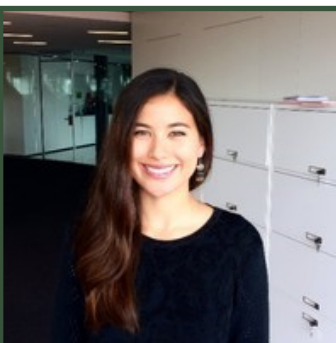


Jinn Qin

PhD Student

Land Economy | jq256@cam.ac.uk

Jinn is interested in environmental law, land law and international law and how they can be applied for sustainable land-use.



Lucy Lu Reimers

Visitor PhD Student

Land Economy | llr24@cam.ac.uk

Lucy's work addresses unsustainable consumption as a driver of climate change and biodiversity loss from an international law perspective.



Dr Sam Reynolds

Research Associate

Zoology | sar87@cam.ac.uk

Sam is investigating a circular economy approach to using the waste shells from invasive mussel species to remove excess nutrients during wastewater treatment and in eutrophic waters.



Kirsten Russell
Conservation Science Group Administrator
Zoology | kt346@cam.ac.uk
Kirsten is the Administrator of the Conservation Science Group for the Department of Zoology.



Dr Pablo Salas
Deputy Director, C-EENRG
Land Economy | pas80@cam.ac.uk
Pablo's research focuses on the policy responses to a major global sustainability challenges, especially climate change and the energy transition.



Dr Chris Sandbrook
Director of Conservation Leadership MPhil
Geography | cgs21@cam.ac.uk
Chris's research investigates the biodiversity conservation and its relationship with society. He is the Director of the MPhil Masters in Conservation Leadership.



Jürgen Sauer
PhD Student
Land Economy | jmts5@cam.ac.uk
Jürgen is based in Land Economy in the Cambridge Centre for Environmental Energy and Natural Resource Governance.



Johanna Schoenecker
PhD Student
Plant Sciences | jss84@cam.ac.uk
Johanna is based in the Department of Plant Sciences and is part of the Disturbance Ecology and Ecosystem Function research group.



Trishant Simlai

PhD Student

Geography | tts25@cam.ac.uk

Trishant's current research revolves around the rising discourse of conservation militarisation.



Dr Rebecca Smith

Senior Research Associate

Zoology | r.k.smith@zoo.cam.ac.uk

Rebecca's work is in evidence-based conservation, which focuses on summarising and disseminating scientific evidence about the effects of conservation interventions for habitats and



Lydia Soifer

MPhil Student

Plant Sciences | ls907@cam.ac.uk

Lydia's research focuses on producing three-dimensional distribution models of tropical epiphytes at microscale with the goal of identifying potential climatic refugia.



Ida Sognnaes

PhD Student

Land Economy | iabs2@cam.ac.uk

Ida is working on the interactions between energy, environment, and economic systems.



Professor William Sutherland

Professor in Conservation Biology

Zoology | w.sutherland@zoo.cam.ac.uk

Bill's research includes applying ecological data and models to understand conservation problems and identifying future issues to determine the effectiveness of interventions.

**Nicky Swan**

Conference Administrator

Zoology | njs80@cam.ac.uk

Nicky is the administrator for the Student Conference on Conservation Science.

**Dr Tom Swinfield**

Postdoctoral Research Associate

Plant Sciences | tws36@cam.ac.uk

Tom uses a variety of remote sensing techniques from structure from motion, LiDAR and multi-temporal satellite observations to assess forest condition and how it responds to external pressures.

**Professor Andrew Tanentzap**

Head of Ecosystems and Global Change Group

Plant Sciences | ajt65@cam.ac.uk

Andrew studies how disturbances alter the functioning and biodiversity of the world's ecosystems in order to generate solutions for mitigating the impacts of global change.

**Anne Thomas**

PhD Student

Plant Sciences | at820@cam.ac.uk

Anne is interested in the intersection of biogeography, evolution, and climate change responses in alpine plant communities, particularly in New Zealand.

**Dr Ann Thornton**

Conservation Biology Coordinator

Zoology | at915@cam.ac.uk

Ann is the Coordinator of the Conservation Biology Group for the Department of Zoology.



Kyaw Sein Win Tun (O'Neil)

PhD Student

Plant Sciences | kswt2@cam.ac.uk

O'Neil's work focuses on measuring the amount of carbon stored in the forests of Myanmar and evaluating values for biodiversity conservation and socioeconomic development of the country.



Dr Edgar Turner

Associate professor of Insect Ecology

Zoology | ect23@cam.ac.uk

Edgar is interested in understanding how landscapes can be managed to maintain biodiversity and healthy functioning Ecosystems while allowing agricultural development.



James Verycken

PhD Student

Zoology | jev33@cam.ac.uk

James is interested in the various ways in which bivalves may be employed as sensors of water quality.



Professor Bhaskar Vira

Professor of Political Economy

Geography | bv101@cam.ac.uk

Bhaskar is interested in the political economy of conservation, environment and development in relation to ecosystem services, natural capitals and the values of nature for human well-being.



Samuel Vosper

PhD Student

Land Economy | sjv31@cam.ac.uk

Samuel's research is focused on the adoption of climate related micro-finance products designed to relieve pressures on rural food security and poverty in Kenya.



Anthony Waldron

Visitor postdoctoral Research Associate

Zoology | aw845@cam.ac.uk

Anthony specialises in global conservation finance and its impact, and in agroforestry systems.



Jacob Watts

MPhil Student

Plant Sciences | jlw90@cam.ac.uk

Jacob's research combines plant root traits and data from fire manipulation studies to make conclusions about how changing fire regimes impact functional diversity.



Dr David Willer

Henslow Research Fellow

Zoology | dw460@cam.ac.uk

David's research focusses on developing mechanisms to improve production of and facilitate demand for one of the most sustainable and nutrient-rich foods on the planet.



Nigel Leader-Williams

Emeritus Professor

Geography | kw425@cam.ac.uk

Professor Nigel Leader-Williams's research focuses on building capacity in conservation through interdisciplinary research and teaching.



Kate Willott

Conservation Evidence Research Assistant

Zoology | kw425@cam.ac.uk

Kate is the Conservation Science Group Assistant for the Department of Zoology.



Eleanor Wildling

PhD Student

Plant Sciences | ekrw2@cam.ac.uk

Eleanor is based in the Department of Plant Sciences and is part of the Disturbance Ecology and Ecosystem Function research group.



Trevelyan Wing

PhD Student

Land Economy | tsw32@cam.ac.uk

Trevelyan is a Land Economy Postgraduate Student supervised by Professor Laura Anadon Diaz.



Sam Woodman

PhD Student

Plant Sciences | sgw@cam.ac.uk

Samuel is interested in understanding the effects of disturbance, particularly by invertebrates, on terrestrial-aquatic linkages.



Valentine Reiss-Woolever

PhD Student

Zoology | vjr30@cam.ac.uk

Valentine's focus is on conservation and income stability in oil palm plantations, evaluating management methods effect on biodiversity, ecosystems and profit.



Dr Thomas Worthington

Postdoctoral Research Associate

Zoology | taw52@cam.ac.uk

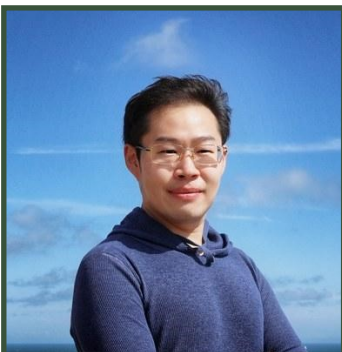
Thomas's projects are centred on conservation of aquatic organisms and environments at landscape and global scales.

**Tom White**

Graduate Student

Zoology | tbw27@cam.ac.uk

Tom is interested in how conservation outcomes and costs are measured, and how decision-making tools from other sectors can be applied to identify cost-effective solutions for conservation.

**Dr Tong Xu**

C-EENRG Fellow

Land Economy | tx224@cam.ac.uk

Tong's research focus is energy and climate policy, R&D institutions and management, and waste plastics management.

**Dr Hiromi Yamashita**

Visitor: Conservation Science Group

Zoology | hy360@cam.ac.uk

Hiromi is a visiting research associate working with the Conservation Science Group.

**Zhengxin (Jasmine) Yang**

MPhil Student

Zoology | zy314@cam.ac.uk

Zhengxin's research focuses on applied ecology and aquatic conservation looking specifically at the quagga mussel (*Dreissena rostriformis bugensis*).

**Yi Zhang**

Lab Manager

Plant Sciences | yz506@cam.ac.uk

Yi provides lab management alongside analytical and research work on long term monitoring of EU lakes with DOMSeasons and GLEON.



UNIVERSITY OF
CAMBRIDGE

Conservation Research Institute

