



UNIVERSITY OF  
CAMBRIDGE  
Conservation Research Institute

## David Attenborough Building **WHO'S WHO**









# Our Research Themes

---

The work programme of the Institute encompasses four broad areas of research, which cross-cut disciplinary and Departmental boundaries. These are indicated in the booklet using the following key:

**Knowledge and Expertise**: Conservation Evidence; 'what works' for the management of terrestrial and aquatic social-ecological systems; new forms of 'Big Data' (from new remote sensing and airborne platforms to social media) and their uses in ecological and social decision making; the science-policy interface and the nature of expertise in a 'Post-Truth' world; diverse and contested knowledge traditions; post-humanism and alternative 'ways of knowing' about humans and nature.

**Conservation Across Protected and Productive Landscapes**: Includes innovative methods and strategies to address species decline and loss of habitats; Land Sharing/Sparing; Integrated Landscape Management for multiple ecosystem services; Protected Area governance and management; REDD+; trade-offs and synergies associated with decision making for multiple stakeholders and multiple benefits across different scales; institutional and governance challenges associated with coupled social-ecological systems.

**Biodiversity in the Future Earth**: Includes work on understanding and changing behaviour in relation to nature and the environment; expectations, incentives, regulations and redistribution for managing human impacts on nature and the drivers of biodiversity loss; material limits to growth, and de-growth; the Nature Needs Half and Half Earth propositions (and their critiques); the histories of conservation practice and policy, and the roles of the state and conservation organisations and conservation.

**The Values of Nature**: Includes work on understanding plural value traditions and the relationship of nature to health, wellbeing, poverty and prosperity; testing potential approaches to reconnect people with nature; the contributions of nature-based approaches to the Sustainable Development Goals and nature-based solutions to mitigating risk and vulnerability; understanding natural and social capitals, and the role of biodiversity in natural capital; assessing ecosystem functions and services, and the contested ways in which these are perceived, used and managed; creative approaches (literature, the arts, media) and how these frame socio-natures.



# The Conservation Research Institute Team

---



**Professor David Coomes**  
**Conservation Research Institute Director**  
*dac18@cam.ac.uk*

David is the director of the Conservation Research Institute and Head of Forest Ecology and Conservation Group. David is interested in understanding how humans are changing the world's forests and how we can reduce impacts.

**Hawa Newell-Sydique**  
**Research & Communications Manager**  
*hma33@cam.ac.uk* | 01223 333 389

As Research Coordinator, Hawa provides support to networks of researchers at the Conservation Research Institute and across the Collegiate University, finding ways to foster closer collaboration and promoting cross-disciplinary funding bids and other activities.



**Carmyn de Jonge**  
**Institute Administrator**  
*cd716@cam.ac.uk* | 01223 760 559

As the Institute Administrator, Carmyn provides administrative support to the Institute, as well as assisting with communications and events, represents the Conservation Research Institute on the David Attenborough Building User Group and Suitability Working Group.



# WHO'S WHO



**Francisco d'Albertas Gomes de Carvalho**  
**Visitor PhD**

Zoology | [Francisco.albertas@gmail.com](mailto:Francisco.albertas@gmail.com)



Francisco's main interest is to investigate management and policy strategies to conciliate agricultural production and biodiversity conservation in fragmented landscapes.



**Dr David Aldridge**  
**Senior Lecturer in Aquatic Ecology**

Zoology | [da113@cam.ac.uk](mailto:da113@cam.ac.uk)



David's work focuses on applied freshwater ecology, with a particular emphasis on bivalve molluscs.



**Professor Laura Diaz Anadon**  
**Professor of Climate Change Policy**

Land Economy | [Ida24@cam.ac.uk](mailto:Ida24@cam.ac.uk)



Professor Laura Diaz Anadon holds the chaired Professorship of Climate Change Policy at the University of Cambridge.



**Professor Andrew Balmford**  
**Professor of Conservation Science**

Zoology | [apb12@cam.ac.uk](mailto:apb12@cam.ac.uk)



Andrew's research focuses on the costs and benefits of conservation and how best to reconcile conservation and farming.



**Esme Ashe-Jepson**  
**PhD Student**

Zoology | [ea483@cam.ac.uk](mailto:ea483@cam.ac.uk)



Esme is interested in how temperature affects butterfly larval growth, survival, and distribution, with a particular focus on how they use their local environment. Esme sits within the Museum of Zoology.





**James Ball**  
**PhD Student**  
*Plant Sciences | [jgcb3@cam.ac.uk](mailto:jgcb3@cam.ac.uk)*



James is a Plant Sciences Postgraduate Student supervised by Professor David Coomes.



**Harriet Bartlett**  
**PhD Student**  
*Zoology | [hb409@cam.ac.uk](mailto:hb409@cam.ac.uk)*



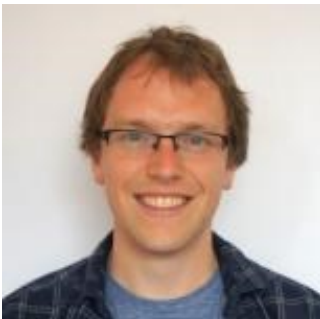
Harriet is interested in food security and sustainable livestock production systems, and particularly the trade-offs between environmental, sustainability, animal welfare and antimicrobial



**Laura Bentley**  
**PhD Student**  
*Plant Sciences | [lb562@cam.ac.uk](mailto:lb562@cam.ac.uk)*



Laura is researching the consequences of spontaneous forest regeneration in the Mediterranean, with a focus on the consequences for hydrology.



**Dr Andrew Bladon**  
**Research Associate**  
*Zoology | [ajb273@cam.ac.uk](mailto:ajb273@cam.ac.uk)*

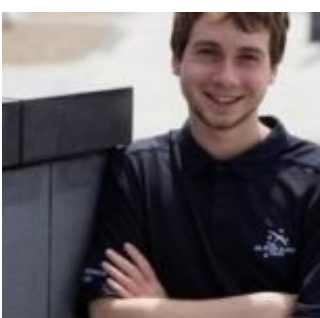


Andrew is interested in the ecological determinants of species ranges, and the impact that human-induced changes are having on species behaviour and distribution.



**Shelley Bolderson**  
**Alumni & Communications Coordinator**  
*Geography | [shelley.bolderson@geog.cam.ac.uk](mailto:shelley.bolderson@geog.cam.ac.uk)*

Shelley is a former archaeologist, who moved in to the communications sector and has been specializing in external affairs and communications at the University of Cambridge for the last 15 years.



**Joshua Brian**  
**PhD Student**  
*Zoology | [jib33@cam.ac.uk](mailto:jib33@cam.ac.uk)*



Joshua is interested in the parasite of freshwater mussels, how they affect these key ecosystem engineers, and their interaction with invasive





**Dr Camilla Campanati**  
**Postdoctoral Research Associate**  
*Zoology* | [cc2011@cam.ac.uk](mailto:cc2011@cam.ac.uk)



Camilla is a research associate of the Aquatic Ecology Group supervised by David Aldridge.



**Dr Rachel Carmenta**  
**Postdoctoral Research Fellow**  
*Geography* | [rc730@cam.ac.uk](mailto:rc730@cam.ac.uk)



Rachel specialises in interdisciplinary research at the intersection of environment and development, environmental risk, governance, and the relationship between place and well-being.



**Gianluca Cerullo**  
**PhD Student**  
*Zoology* | [grc38@cam.ac.uk](mailto:grc38@cam.ac.uk)



Gianluca is interested in how different restoration strategies vary in their abilities to benefit people and wildlife in the highlands of Southern Ethiopia.



**Alec Christie**  
**PhD Student**  
*Zoology* | [apc58@cam.ac.uk](mailto:apc58@cam.ac.uk)



Alec researches how we can rate the quality, geographical applicability and effectiveness of conservation interventions so that species and ecosystems are conserved using more evidence-based approaches.



**Professor Douglas Clark**  
**Visitor Professor**  
*Geography* | [dc772@cam.ac.uk](mailto:dc772@cam.ac.uk)



Doug is from the University of Saskatchewan. His research program integrates environmental conservation with human dignity, and specializes in training northern and Indigenous graduate students.



**Professor David Coomes**  
**Head of Forest Ecology and Conservation**  
*Plant Sciences* | [dac18@cam.ac.uk](mailto:dac18@cam.ac.uk)



David is interested in understanding how humans are changing the world's forests and how we can reduce impacts.





**Lydia Collas**  
**PhD Student**  
Zoology | [lc591@cam.ac.uk](mailto:lc591@cam.ac.uk)



Lydia is investigating farmers willingness to participate in agricultural environment schemes, specifically in the context of land-sparing and land-sharing agriculture.



**Sophia Cooke**  
**PhD Student**  
Zoology | [sc647@cam.ac.uk](mailto:sc647@cam.ac.uk)



Sophia studies the effects of roads on birds and bats in Britain, and the impacts on an introduced bird species, the Smooth-billed Ani *Crotophaga ani*, in the Galapagos Islands.



**Conor Cooper**  
**PhD Student**  
Zoology | [cc964@cam.ac.uk](mailto:cc964@cam.ac.uk)



Conor is a graduate student who is a part of the Conservation Science Group.



**Roberto Correa**  
**PhD Student**  
Zoology | [rjc206@cam.ac.uk](mailto:rjc206@cam.ac.uk)



Roberto is interested in how we can maximise the return on investment in biodiversity conservation.



**Sam Cottingham**  
**PhD Student**  
Plant Sciences | [sd58@cam.ac.uk](mailto:sd58@cam.ac.uk)



Sam is a Plant Sciences Postgraduate Student supervised by Professor David Coomes.



**Alejandro Guizar Coutiño**  
**PhD Student**  
Plant Sciences | [ag997@cam.ac.uk](mailto:ag997@cam.ac.uk)



Alejandro is broadly interested in areas related to biodiversity conservation, climate change and sustainability.





**Dr Zara-Louise Cowan**  
**Research Associate**  
*Zoology | [zlc25@cam.ac.uk](mailto:zlc25@cam.ac.uk)*



Zara is a Research Associate who is a part of the Aquatic Ecology Group.



**Carmyn de Jonge**  
**Institute Administrator**  
*Geography | [cd716@cam.ac.uk](mailto:cd716@cam.ac.uk)*

As the Institute Administrator, Carmyn provides administrative support to the Institute, as well as assisting with communications and events.



**Dr Lynn Dicks**  
**Lecturer in Animal Ecology**  
*Zoology | [Lynn.Dicks@zoo.cam.ac.uk](mailto:Lynn.Dicks@zoo.cam.ac.uk)*



Lynn works on wild pollinator conservation in agricultural landscapes and evidence-based conservation.



**Dr Harriet Downey**  
**Postdoctoral Research Associate**  
*Zoology | [hd438@cam.ac.uk](mailto:hd438@cam.ac.uk)*



Harriet is interested in biodiversity conservation with much of my work to date focusing upon the diversity of plant and insect communities.



**Charles Emogor**  
**PhD Student**  
*Zoology | [cae37@cam.ac.uk](mailto:cae37@cam.ac.uk)*



Charles research seeks to understand the population dynamics and ecology of three pangolin species in Nigeria.



**Philip Erm**  
**PhD Student**  
*Zoology | [ple23@cam.ac.uk](mailto:ple23@cam.ac.uk)*



Philip is interested in finding out how best to conserve marine biodiversity given the many pressures placed upon our planet's oceans by humanity.





**Dr Jeremy Fonvielle**  
**Postdoctoral Research Associate**  
*Plant Sciences | [jaf91@cam.ac.uk](mailto:jaf91@cam.ac.uk)*



Jeremy is a research associate and supervised for Dr Andrew Tanentzap.



**Erika Freeman**  
**Postdoctoral Research Associate**  
*Plant Sciences | [ecf31@cam.ac.uk](mailto:ecf31@cam.ac.uk)*



Erika is a post graduate student for the Department of Plant Sciences. She is supervised by Dr Andrew Tanentzap.



**Yasmine Marie Gatt**  
**PhD Student**  
*Zoology | [ymg23@cam.ac.uk](mailto:ymg23@cam.ac.uk)*



Yasmine is visiting PhD student who is supervised by Tom Worthington.



**Dr Andrew Friend**  
**Reader in Earth Systems Science**  
*Geography | [andrew.friend@geog.cam.ac.uk](mailto:andrew.friend@geog.cam.ac.uk)*



Andrew's research concern controls on terrestrial vegetation type, structure, productivity over a wide range of time, space scales and the effects of vegetation on atmospheric processes through land



**Emma Garnett**  
**PhD Student**  
*Zoology | [eg33@cam.ac.uk](mailto:eg33@cam.ac.uk)*



Emma is researching which interventions work to reduce the environmental impact of diet.



**Dr Jonas Geldmann**  
**Postdoctoral Research Associate**  
*Zoology | [jg794@cam.ac.uk](mailto:jg794@cam.ac.uk)*



Jonas's work focuses on understanding the effectiveness of protected areas in reducing pressures and threats.





**Gabriella Ghelani**  
**Earth Optimism**  
*Zoology | gg491@cam.ac.uk*



Gabriella is assisting in the coordination of Earth Optimism Summit 2020.



**Prem Singh Gill**  
**PhD Student**  
*Geography | psg32@cam.ac.uk*



Prem's studies the monitoring of Antarctic ice seal populations can indicate changes in the Antarctic ecosystem's status and health.



**Vassilis Gkoumas**  
**PhD Student**  
*Land Economy | vg345@cam.ac.uk*



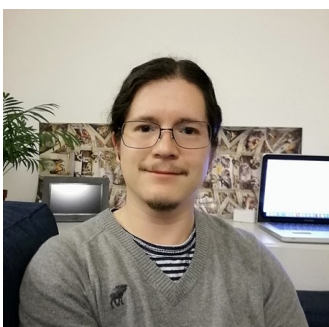
Vassilis is a Land Economy Postgraduate Student supervised by Professor Andreas Kontoleon and Dr Nikoleta Jones. Vassilis studies the socioeconomic impacts of protected areas on local communities.



**Lucy Goodman**  
**PhD Student**  
*Geography | lg368@cam.ac.uk*



Lucy is interested in the social and environmental impacts of dams in South Asia and environmental economics.



**Juan Pablo Narv ez G mez**  
**PhD Student**  
*Plant Sciences | jpn34@cam.ac.uk*



Juan Pablo is a Plant Sciences visitor supervised by Professor David Coomes.



**Dr Fernando Gon alves**  
**Visiting Postdoctoral Research Associate**  
*Zoology | fhmgoncalves@gmail.com*



Fernando is interested in furthering our understanding of the effects of habitat loss and land use change on plant and animals.





**Professor Rhys Green**  
**Honorary Professor of Conservation Science**  
Zoology | [reg29@cam.ac.uk](mailto:reg29@cam.ac.uk)



Rhys studies the effects of human activities on populations sizes and demographic rates of wild species.



**Lisa Harris**  
**Programme Administrator, Conservation Leadership MPhil**  
Geography | [lh382@cam.ac.uk](mailto:lh382@cam.ac.uk)

Lisa is the Programme Administrator for the Conservation Leadership MPhil.



**Martina Harianja**  
**PhD Student**  
Zoology | [mfh46@cam.ac.uk](mailto:mfh46@cam.ac.uk)



Martina is interested in understanding how biodiversity and ecosystem functions benefit from landscape management in the tropics. Martina sits within the Museum of Zoology.



**Matthew Hayes**  
**Research Assistant**  
Zoology | [mph51@cam.ac.uk](mailto:mph51@cam.ac.uk)



Matthew is interested in studying the ecology, behaviour and habitat requirements of invertebrates in the UK. Matthew sits within the Museum of Zoology.



**Julie Hinsch**  
**PhD Student**  
Zoology | [jh2024@cam.ac.uk](mailto:jh2024@cam.ac.uk)



Julie's main research interests are sustainable development and ecosystem functions and services, with focus on insect communities. Julie is based within the Museum of Zoology.



**Amelia Hood**  
**PhD Student**  
Zoology | [ah684@cam.ac.uk](mailto:ah684@cam.ac.uk)



Amelia is interested in applied ecology and conservation, in particular social insects, science communication and public engagement.





**Kate Howlett**  
**PhD Student**  
*Zoology* | [kh557@cam.ac.uk](mailto:kh557@cam.ac.uk)



Kate is interested in the relationship between biodiversity and wellbeing. Kate is based within the Museum of Zoology.



**Toby Jackson**  
**PhD Student**  
*Plant Sciences* | [tj312@cam.ac.uk](mailto:tj312@cam.ac.uk)



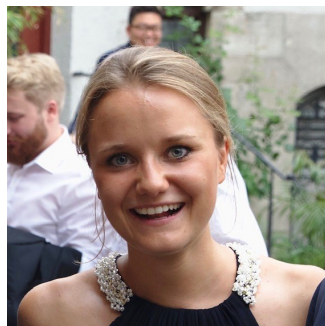
Toby is a Plant Sciences Postgraduate Student supervised by Professor David Coomes.



**Dr Nikoleta Jones**  
**Principle Research Associate**  
*Land Economy* | [nj322@cam.ac.uk](mailto:nj322@cam.ac.uk)



Dr Jones is an environmental social scientist and her work focuses mainly on social impacts of environmental policies and improving the levels of public acceptability for policy initiatives.



**Thea Jung**  
**PhD Student**  
*Land Economy* | [tj25@cam.ac.uk](mailto:tj25@cam.ac.uk)



Thea is a Land Economy Postgraduate Student supervised by Professor Laura Anadon Diaz.



**Sacha Khoury**  
**PhD Student**  
*Plant Sciences* | [sk884@cam.ac.uk](mailto:sk884@cam.ac.uk)



Sacha is interested in evaluating the changes in forest growth patterns, greenness, and canopy water content, in Spain for the last 17 years.



**Professor Andreas Kontoleon**  
**Professor of Environmental Economics and Public Policy**  
*Land Economy* | [ak219@cam.ac.uk](mailto:ak219@cam.ac.uk)



Andreas is interested in the economics of environmental regulation and policy, and the economics of biodiversity.





**Dr Sergey Kolesnikov**  
**Postdoctoral Research Associate**  
*Land Economy* | [sk2063@cam.ac.uk](mailto:sk2063@cam.ac.uk)



Sergey is an interdisciplinary scholar and practitioner in science, technology and innovation policy with a background in physics and technology-based economic development.



**Tate Lavitt**  
**MPhil Student**  
*Zoology* | [tl488@cam.ac.uk](mailto:tl488@cam.ac.uk)



Tate's work focuses on the Duke of Burgundy butterfly. Tate is based within the Museum of Zoology.



**Matthew Lewis**  
**MPhil Student**  
*Zoology* | [ml807@cam.ac.uk](mailto:ml807@cam.ac.uk)



Matthew's current research focuses on unpicking the causes of decline of the Small Heath butterfly, a UK Biodiversity Action Plan Priority Species. Matthew is based in the Museum of Zoology.



**Dr Deyu Li**  
**Postdoctoral Research Associate**  
*Land Economy* | [dl650@cam.ac.uk](mailto:dl650@cam.ac.uk)



Deyu is a postdoctoral researcher whose research interests are innovation studies.



**Rogelio Luque Lora**  
**PhD Student**  
*Geography* | [rl469@cam.ac.uk](mailto:rl469@cam.ac.uk)



Rogelio's research focuses which values shape conservationists' views on conservation, how these values differ between various stakeholders, and the role of landscapes in shaping those values.



**Paul Lohmann**  
**PhD Student**  
*Land Economy* | [pml44@cam.ac.uk](mailto:pml44@cam.ac.uk)



Paul is a researcher at Cambridge Centre of Environment, Energy and Natural Resource Governance (CEENRG) and co-editor of the CEENRG Working Paper series.





**Dr Sarah Luke**  
**Postdoctoral Research Associate**  
Zoology | [shl47@cam.ac.uk](mailto:shl47@cam.ac.uk)



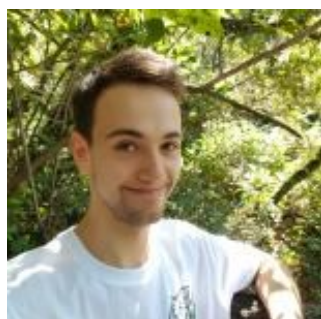
Sarah studies the effects of habitat change on biodiversity, ecosystem functions, and development of possible strategies for conservation.



**Douglas MacFarlane**  
**PhD Student**  
Zoology | [dm785@cam.ac.uk](mailto:dm785@cam.ac.uk)



Douglas is interested in how interventions, based on evidence from experimental psychology, can be applied to deal with complex societal problems, such as addressing the illicit wildlife trade.



**Calum Maney**  
**Graduate Student**  
Zoology | [cgm36@cam.ac.uk](mailto:cgm36@cam.ac.uk)



Calum's work focuses on the ecological implications of national commitments to biodiversity and the ways in which we can identify, and address, the shortfalls in these.



**Dr Phil Martin**  
**Postdoctoral Research Associate**  
Zoology | [pam79@cam.ac.uk](mailto:pam79@cam.ac.uk)



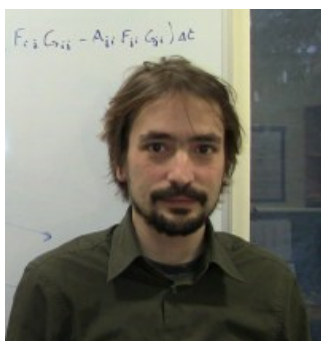
Phil studies the effectiveness of conservation interventions and ecological restoration.



**Dr Cicely Marshall**  
**Visitor Postdoctoral Research Fellow**  
Plant Sciences | [cm997@cam.ac.uk](mailto:cm997@cam.ac.uk)



Cicely's work aims to describe patterns of species distribution across tropical Africa and uncover the evolutionary and ecological processes that created and maintain them.



**Dr Jean-Francois Mercure**  
**Senior Lecturer**  
Land Economy | [jm801@cam.ac.uk](mailto:jm801@cam.ac.uk)



Dr Jean-Francois Mercure is a computational scientist in the area of low-carbon innovation, macroeconomics, finance and climate change.





**Arile McCarthy**  
**PhD Student**  
Zoology | [ahm43@cam.ac.uk](mailto:ahm43@cam.ac.uk)



Arile's research addresses the risk posed by marine invasive species in Antarctica.



**Fleur Nash**  
**PhD Student**  
Geography | [fn266@cam.ac.uk](mailto:fn266@cam.ac.uk)



Fleur is a Geography Postgraduate Student who is supervised by Chris Sandbrook.



**Dr Howard Nelson**  
**MPhil Conservation and Leadership Lecturer**  
Geography



Howard's is an ecologist and wildlife biologist who specialises in the ecological study of the mammalian community of Trinidad.



**Kristian Nielsen**  
**PhD Student**  
Zoology | [ksn27@cam.ac.uk](mailto:ksn27@cam.ac.uk)



Kristian is a Zoology Postgraduate Student and member of the Conservation Science Group. He is supervised by Professor Andrew Balmford.



**Isobel Ollard**  
**PhD Student**  
Zoology | [iso21@cam.ac.uk](mailto:iso21@cam.ac.uk)



Isobel is a Zoology graduate student. She is supervised by Dr David Aldridge.



**Dr Yuan Pan**  
**Postdoctoral Research Associate**  
Geography | [yp273@cam.ac.uk](mailto:yp273@cam.ac.uk)



Yuan is an interdisciplinary scientist working on incorporating biodiversity into the natural capital framework by using ecological and social sciences approaches.





**Michael Pashkevich**  
**PhD Student**  
*Zoology* | [mdp48@cam.ac.uk](mailto:mdp48@cam.ac.uk)



Michael's research interests are focused on spider ecology and sustainable agricultural management. Michael is based in the Museum of Zoology.



**Dr Silviu Petrovan**  
**Postdoctoral Research Associate**  
*Zoology* | [sop21@cam.ac.uk](mailto:sop21@cam.ac.uk)



Silviu's research focuses on understanding the effects of anthropogenic changes on biodiversity and improving evidence-based solutions.



**Olga Płócienniczak**  
**Programme Administrator, Conservation Leadership MPhil**  
*Geography* | [admin.conservationalleadership@geog.cam.ac.uk](mailto:admin.conservationalleadership@geog.cam.ac.uk)

Olga is the interim Programme Administrator for the Conservation Leadership MPhil.



**Janice Purath | Conference Administrator**  
*Zoology* | [jpp44@cam.ac.uk](mailto:jpp44@cam.ac.uk)

Janice is the Conference Administrator and aids in organising the Student Conference on Conservation Science.



**Lucy Lu Reimers**  
**PhD Student**  
*Land Economy* | [llr24@cam.ac.uk](mailto:llr24@cam.ac.uk)



Lucy is a visiting Land Economy Postgraduate Student from Geneva.



**Sam Reynolds**  
**PhD Student**  
*Zoology* | [sar87@cam.ac.uk](mailto:sar87@cam.ac.uk)



Sam is interested in 'Synthetic Ecology', the idea that by being able to manipulate certain components of an ecosystem you can alter the properties of the climax community.





**Kirsten Russell**  
**Conservation Science Group Administrator**  
*Zoology | [kt346@cam.ac.uk](mailto:kt346@cam.ac.uk)*

Kirsten is the Administrator of the Conservation Science Group for the Department of Zoology.



**Dr Katie Sainsbury**  
**Postdoctoral Research Associate**  
*Zoology | [kas204@cam.ac.uk](mailto:kas204@cam.ac.uk)*



Katie is interested in applied conservation research systems where social and natural sciences meet.



**Dr Chris Sandbrook**  
**Director of Conservation Leadership MPhil**  
*Geography | [cgs21@cam.ac.uk](mailto:cgs21@cam.ac.uk)*



Chris's research investigates the biodiversity conservation and its relationship with society. He is the Director of the MPhil Masters in Conservation Leadership.



**Dr Pablo Salas**  
**Deputy Director, C-EENRG**  
*Land Economy | [pas80@cam.ac.uk](mailto:pas80@cam.ac.uk)*



Pablo's research focuses on the policy responses to a major global sustainability challenges, especially climate change and the energy transition.



**Annika Schlemm**  
**PhD Student**  
*Zoology | [as3003@cam.ac.uk](mailto:as3003@cam.ac.uk)*



Annika is interested in molecular ecology and using interdisciplinary approaches to predict and mitigate the consequences of anthropogenic environmental change.



**Dr Gorm Shackelford**  
**Postdoctoral Research Associate**  
*Zoology | [ges47@cam.ac.uk](mailto:ges47@cam.ac.uk)*



Gorm's research is focused on evidence synthesis: systematic reviews of scientific studies about biodiversity conservation and ecosystem services, especially in agricultural ecosystems.





**Dr Cagan Sekercioglu**

**Visitor Professor**

Zoology | [cagan.sekercioglu@zoology.org](mailto:cagan.sekercioglu@zoology.org)



Cagan is visiting professor from the University of Utah. He is a conservation ecologist, ornithologist, tropical biologist, and nature photographer.



**Trishant Simlair**

**PhD Student**

Geography | [tts25@cam.ac.uk](mailto:tts25@cam.ac.uk)



Trishant's current research revolves around the rising discourse of conservation militarisation.



**Dr Rebecca Smith**

**Postdoctoral Research Associate**

Zoology | [r.k.smith@zoo.cam.ac.uk](mailto:r.k.smith@zoo.cam.ac.uk)



Rebecca's work is in evidence-based conservation, which focuses on summarising and disseminating scientific evidence about the effects of conservation interventions for habitats and species.



**Ida Sognaes**

**PhD Student**

Land Economy | [iabs2@cam.ac.uk](mailto:iabs2@cam.ac.uk)



Ida is a PhD researcher at C-EENRG working on the interactions between energy, environment, and economic systems.



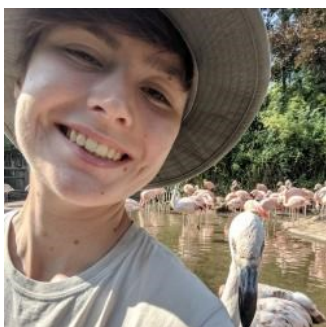
**Jake Stone**

**PhD Student**

Zoology | [js2453@cam.ac.uk](mailto:js2453@cam.ac.uk)



Jake's main interest is in how developing a greater understanding of interspecific interactions within ecological communities can influence and improve future conservation strategy. Jake is based in the Museum of Zoology.



**Alice Stuart**

**Graduate Student**

Zoology | [ads86@cam.ac.uk](mailto:ads86@cam.ac.uk)



Alice is a masters student mapping the literature on the threats facing birds of prey with Professor William Sutherland.

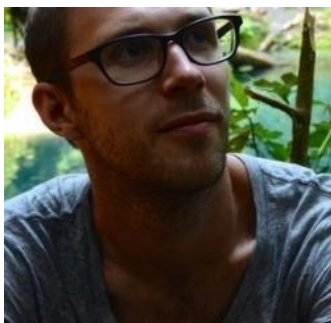




**Professor William Sutherland**  
**Professor in Conservation Biology**  
*Zoology | wjs32@cam.ac.uk*



Bill's research includes applying ecological data and models to understand conservation problems and identifying future issues to determine the effectiveness of interventions.



**Dr Tom Swinfield**  
**Postdoctoral Research Associate**  
*Plant Sciences | tws36@cam.ac.uk*



Tom is investigating how human activity alters the functioning and restoration potential of tropical landscapes.



**Hawa Newell-Sydique**  
**Research & Communications Manager**  
*Geography | hma33@cam.ac.uk*

Hawa provides support to networks of researchers at UCCRI and across the Collegiate University, finding ways to foster closer collaboration and promoting cross-disciplinary funding bids and other activities.



**Dr Andrew Tanentzap**  
**Head of Ecosystems and Global Change Group**  
*Plant Sciences | ajt65@cam.ac.uk*



Andrew studies how disturbances alter the functioning and biodiversity of the world's ecosystems in order to generate solutions for mitigating the impacts of global change.



**Feng Tang**  
**PhD Student**  
*Zoology | ft290@cam.ac.uk*



Feng's research explores the importance of brackish waters as major entrances for invasive non-native species into Great Britain's freshwater and marine ecosystems.



**Anne Thomas**  
**PhD Student**  
*Plant Sciences | at820@cam.ac.uk*



Anne is a post graduate student in the Department of Plant Sciences.





**Dr Ann Thornton**  
**Conservation Biology Coordinator**  
*Zoology | [at915@cam.ac.uk](mailto:at915@cam.ac.uk)*



Ann is the Coordinator of the Conservation Biology Group for the Department of Zoology.



**Stanley Quek Tee**  
**PhD Student**  
*Zoology | [stkq2@cam.ac.uk](mailto:stkq2@cam.ac.uk)*



Stanley is primarily interested in studying urban ecology with an aim to develop a biophilic urbanization framework. Stanley is based within the Museum of Zoology.



**Kyaw Sein Win Tun (O'Neil)**  
**PhD Student**  
*Plant Sciences | [kswt2@cam.ac.uk](mailto:kswt2@cam.ac.uk)*



Kyaw's research focuses on measuring the amount of carbon stored in the forests of Myanmar and evaluating their values for biodiversity conservation and socioeconomic development of the country.



**Dr Edgar Turner**  
**Lecturer**  
*Zoology | [ect23@cam.ac.uk](mailto:ect23@cam.ac.uk)*



Edgar is interested in understanding how landscapes can be managed to maintain biodiversity and healthy functioning Ecosystems while allowing agricultural development to take place.



**James Verycken**  
**PhD Student**  
*Zoology | [jev33@cam.ac.uk](mailto:jev33@cam.ac.uk)*



James is conducting his PhD research under the supervision of David Aldridge at the Department of Zoology. His research is in the area of Freshwater Mussels as Environmental Sensors.



**Professor Bhaskar Vira**  
**Professor of Political Economy**  
*Geography | [bv101@cam.ac.uk](mailto:bv101@cam.ac.uk)*



Bhaskar is interested in the political economy of conservation, environment and development in relation to ecosystem services, natural capitals and the values of nature for human well-being.





**Hannah Wauchope**  
**PhD Student**  
*Zoology* | [hsw34@cam.ac.uk](mailto:hsw34@cam.ac.uk)



Hannah is interested in how we can use big datasets to investigate and solve conservation problems on a broad scale.



**Anthony Waldron**  
**Postdoctoral Research Associate**  
*Zoology* | [aw845@cam.ac.uk](mailto:aw845@cam.ac.uk)



Anthony is a visiting member of the Conservation Science Group.



**Michael Weinold**  
**PhD Student**  
*Land Economy*



Michael is a Land Economy Postgraduate Student supervised by Professor Laura Anadon Diaz.



**David Willer**  
**PhD Student**  
*Zoology* | [dw460@cam.ac.uk](mailto:dw460@cam.ac.uk)



David's research focusses on the development and testing of microencapsulated diets to improve output and sustainability in commercial bivalve shellfish production.



**Jon Williams**  
**PhD Student**  
*Plant Sciences* | [jvw28@cam.ac.uk](mailto:jvw28@cam.ac.uk)



Jonathan works on developing image analysis techniques to facilitate the low-cost monitoring of tropical rain forest restoration projects through the use of unmanned aerial vehicles.



**Kate Willott**  
**Conservation Evidence Research Assistant**  
*Zoology* | [kw425@cam.ac.uk](mailto:kw425@cam.ac.uk)

Kate is the Conservation Science Group Assistant for the Department of Zoology.





**Brett Wilson**  
**PhD Student**  
*Plant Sciences | [bdw35@cam.ac.uk](mailto:bdw35@cam.ac.uk)*



Brett is in collaboration with Fauna and Flora International, carrying out a PhD focused on understanding wild tulip diversity in Central Asia and how best to protect it.



**Trevelyan Wing**  
**PhD Student**  
*Land Economy | [tsw32@cam.ac.uk](mailto:tsw32@cam.ac.uk)*



Trevelyan is a Land Economy Postgraduate Student supervised by Professor Laura Anadon Diaz.



**Sam Woodman**  
**PhD Student**  
*Plant Sciences | [sgw@cam.ac.uk](mailto:sgw@cam.ac.uk)*



Samuel is interested in understanding the effects of disturbance, particularly by invertebrates, on terrestrial-aquatic linkages.



**Valentine Reiss-Woolever**  
**PhD Student**  
*Zoology | [vjr30@cam.ac.uk](mailto:vjr30@cam.ac.uk)*



Valentine's focus is on conservation and income stability in oil palm plantations, evaluating management methods effect on biodiversity, ecosystems and profit. Valentine is based in the Museum of Zoology.



**Dr Thomas Worthington**  
**Postdoctoral Research Associate**  
*Zoology | [taw52@cam.ac.uk](mailto:taw52@cam.ac.uk)*



Thomas's projects are centred on conservation of aquatic organisms and environments at landscape and global scales.



**Tom White**  
**Graduate Student**  
*Zoology | [tbw27@cam.ac.uk](mailto:tbw27@cam.ac.uk)*



Tom's research aims to help enhance the cost-effectiveness of wildlife conservation practice.







# CCI Services

---

## CCI Services Contacts

- CCI Reception: 01223 331299 | [reception@cciservices.co.uk](mailto:reception@cciservices.co.uk)
  - Timothe Balzotti: 01223 331357 | [timothe.balzotti@cciservices.co.uk](mailto:timothe.balzotti@cciservices.co.uk)
  - Matt Clark: 01223 331292 | [matt.clarke@cciservices.co.uk](mailto:matt.clarke@cciservices.co.uk)
- 



### **Timothe Balzotti** **Facilities Assistant**

CCI Services | [timothe.balzotti@cciservices.co.uk](mailto:timothe.balzotti@cciservices.co.uk)

Tim is the Facilities Assistant for the David Attenborough Building. He joined CCI Services on September, 2018. Tim can be found in the Facilities Office on the 1st Floor.



### **Shriti Barot** **Receptionist**

CCI Services | [shriti.barot@cciservices.co.uk](mailto:shriti.barot@cciservices.co.uk)

Shriti is the receptionist for CCI Services.



### **Matt Clark** **Facilities Manager**

CCI Services | [matt.clark@cciservices.co.uk](mailto:matt.clark@cciservices.co.uk)

Matt is the Facilities Manager for CCI Services, having joined the team on the 2nd of January, 2020. Matt can be found in the Facilities Office on the 1st Floor.



### **Libby Daley** **Sustainability Project Assistant**

CCI Services | [libby.daley@cciservices.co.uk](mailto:libby.daley@cciservices.co.uk)

Libby is part of the Sustainability Team, working to reduce the environmental footprint of the David Attenborough Building with the long-term goal of making the building's environmental impact net-positive!





**Catrin Darsley**  
**Sustainability Project Manager**

*CCI Services | [catrin.darsley@cciservices.co.uk](mailto:catrin.darsley@cciservices.co.uk)*

Catrin is the Sustainability Project Manager for the David Attenborough Building, with responsibility for leading the implementation of the David Attenborough Building Sustainability Action Plan.



**Alison Edwards**  
**Receptionist**

*CCI Services | [alison.edwards@cciservices.co.uk](mailto:alison.edwards@cciservices.co.uk)*

Alison is a part time Receptionist, working on Tuesday and Thursday each week. Alison's main responsibilities include welcoming visitors and building users, answering phone and email communications, and adding new starters to all of the building systems.



**Jack Foxall**  
**Head of CCI Services**

*CCI Services | [jack.foxall@cciservices.co.uk](mailto:jack.foxall@cciservices.co.uk)*

Jack manages CCI Services which oversees the facilities and services provided within the CCI Campus.



**Lizzie Sparrow | Leventis Library Manager**

*CCI Services | [lizzie.sparrow@cciservices.co.uk](mailto:lizzie.sparrow@cciservices.co.uk)*

Lizzie has been running the A.G. Leventis Library & Information Services since it opened in December 2015. Lizzie manages the library collections, training programme and communications outside the common room.









**UNIVERSITY OF  
CAMBRIDGE**  
Conservation Research Institute

[www.conservation.cam.ac.uk](http://www.conservation.cam.ac.uk)  
**David Attenborough Building**  
**New Museums Site**  
**Cambridge, CB2 3QZ**

